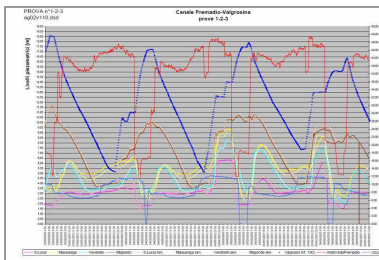
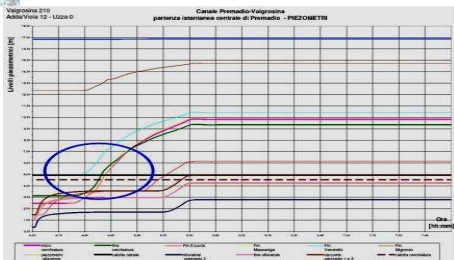
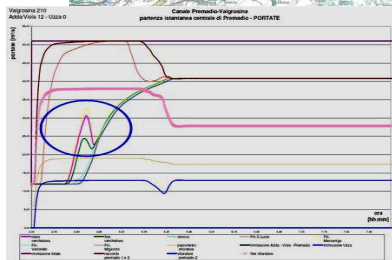
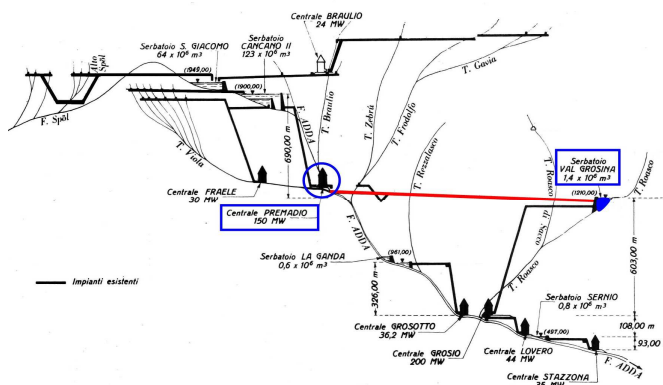
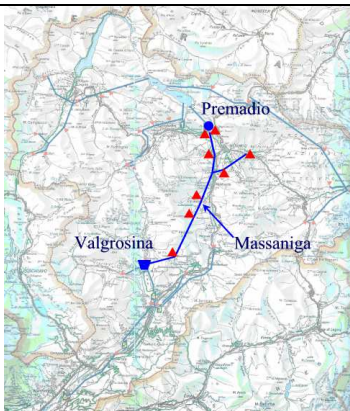


EDISON SpA

INDAGINI SPERIMENTALI E MODELLAZIONE DEI TRANSITORI DI MOTO VARIO A PELO LIBERO ED IN
PRESSIONE NELLA GALLERIA IDROELETTRICA PREMADIO-VALGROSINA
ETATEC srl - Milano



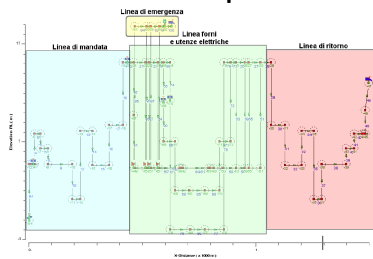
ETATEC srl – Anno 2003 - 2004.

SMS INNSE S.p.a.

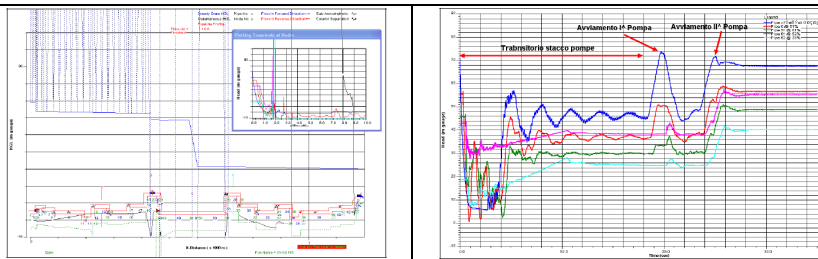
HORMOZGAN STEEL COMPLEX (HOSCO)

IMPIANTO DI RAFFREDDAMENTO DEL CIRCUITO FORNI ELETTRICI

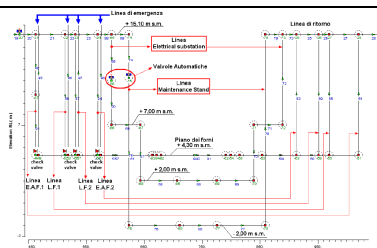
Schema d'impianto



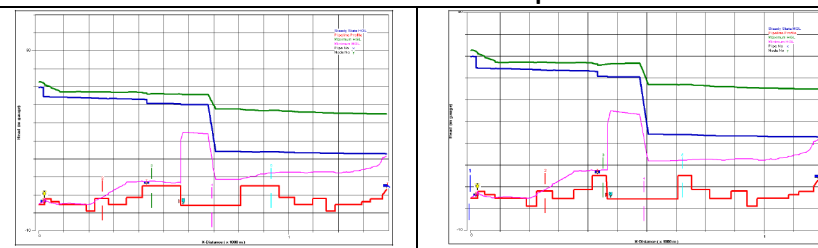
Transitorio elastico SdF



Schema altimetrico utenze



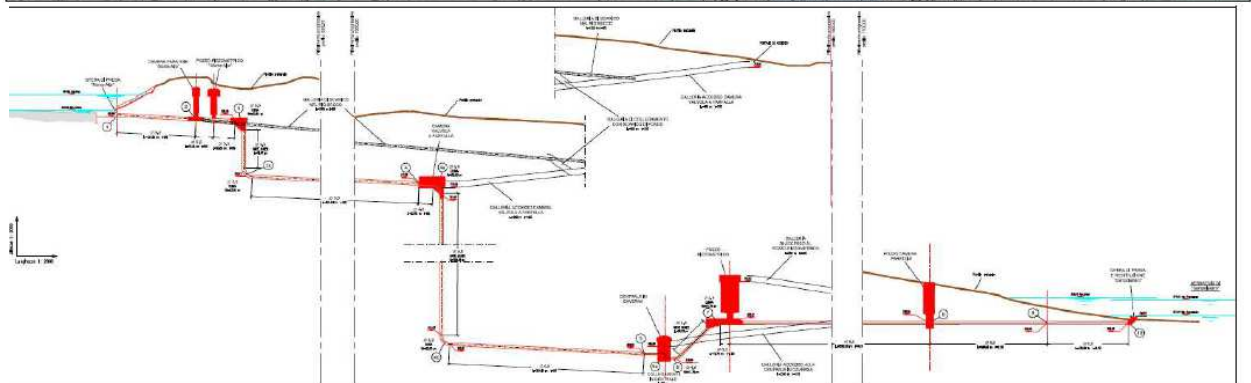
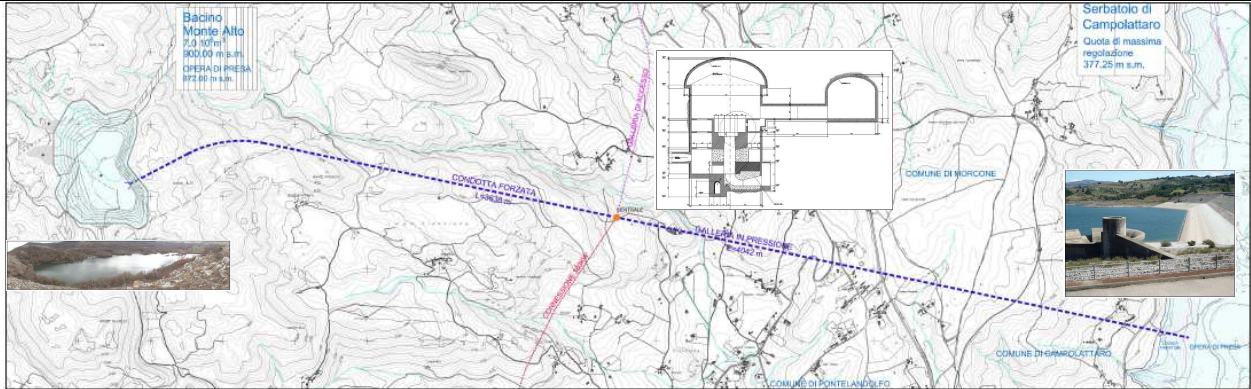
Andamento dei transitori di colpo d'ariete



Verifica idraulica dei transitori elastici di colpo d'ariete
ETATEC srl – Anno 2010

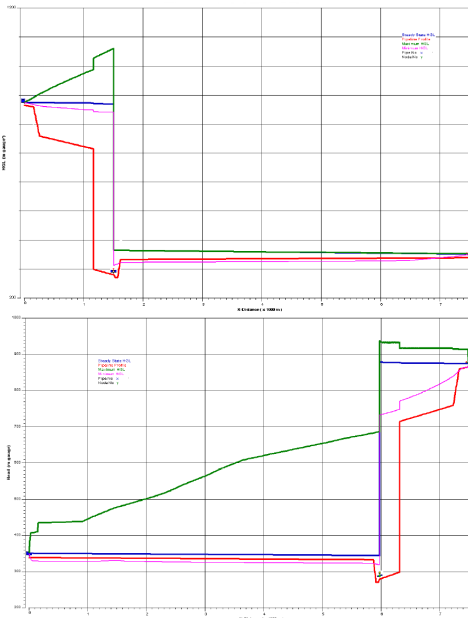
R.E.C. S.r.l.

Impianto idroelettrico di regolazione di Campolattaro (BN)



Andamento dei transitori di colpo d'ariete

Fase di turbinaggio



Fase di pompaggio

